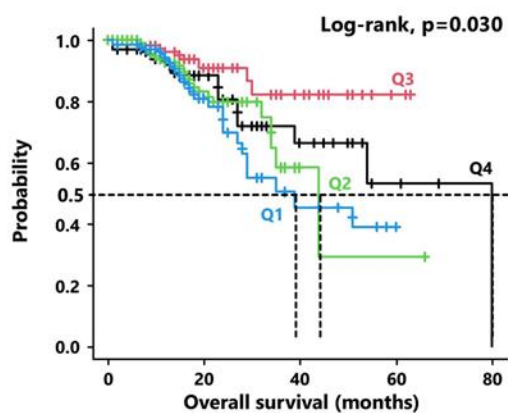


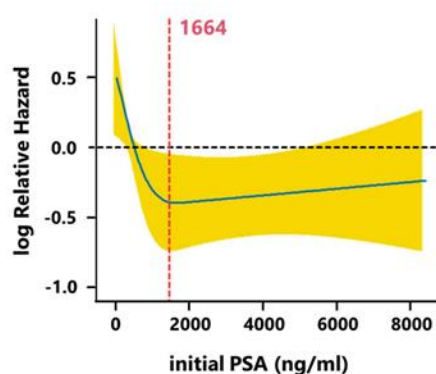
(A) Overall Survival

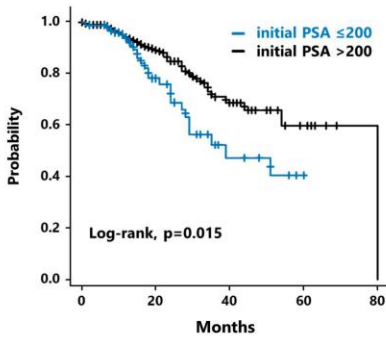


Quartiles of iPSA(ng/ml)	
Q1	7 - 174
Q2	175 - 541
Q3	550 - 1848
Q4	1924 - 27225

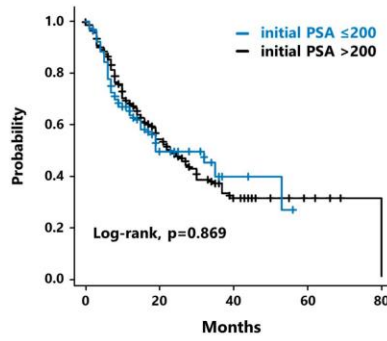
Number at risk					
Q1	69	32	9	1	0
Q2	69	25	4	1	0
Q3	69	31	13	3	0
Q4	69	36	12	3	1

(B) OS hazard ratio by iPSA

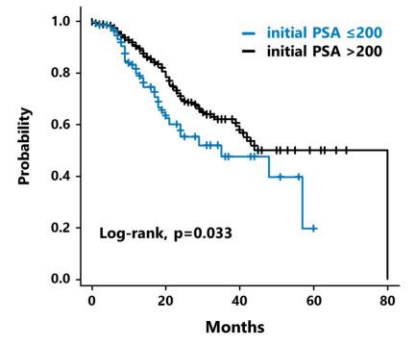


(A) Overall Survival

Number at risk	0	20	40	60	80
≤200	77	36	9	1	0
>200	199	88	29	7	1

(B) Progression free survival

Number at risk	0	20	40	60	80
≤200	77	21	4	0	0
>200	199	55	15	4	1

(C) Second progression free survival

Number at risk	0	20	40	60	80
≤200	77	30	8	1	0
>200	199	79	22	6	1

Table 2. Comparison of Patient Characteristics by initial PSA Levels (≤200 vs. >200)

Variable	initial PSA ≤200 (n=77)	initial PSA >200 (n=199)	p-value
Age (years), median (range) * ¹	75.0 (51-88)	73 (51- 98)	0.204
ECOG PS ≥1, no. (%)	32 (41.6)	82 (41.2)	0.594
initial PSA (ng/ml), median (range)	75.22 (7.0- 199)	1036 (219- 27225)	<0.001**
Gleason Grade group, no. (%)			0.308
GG ≤2	2 (2.6)	2 (1.0)	
GG 3	3 (3.9)	4 (2.1)	
GG 4	19 (25.0)	65 (33.5)	
GG 5	52 (68.4)	123 (63.4)	
Visceral metastasis, no. (%)			
all	16 (20.8)	58 (29.1)	0.175
lung	16 (20.8)	53 (26.6)	1.000
liver	1 (1.3)	8 (4.0)	0.452
other	1 (1.3)	4 (2.0)	0.355
Clinical T stage, no. (%)			0.183
T 1	1 (1.3)	1 (0.5)	
T 2	13 (17.1)	50 (25.4)	
T 3	38 (50.0)	75 (38.1)	
T 4	24 (31.6)	71 (36.0)	
ALP(IU/ml) * ² , median (range)	342(47- 14056)	621.5 (35- 45260)	0.002**
LDH(IU/ml) * ³ , median (range)	198 (38- 1059)	218 (113- 1865)	0.021*
ARSI in1st-line therapy, no. (%)			0.099
Abiraterone	52 (67.5)	158 (79.4)	
Enzalutamide	12 (15.6)	22 (11.1)	
Apalutamide	13 (16.9)	19 (9.5)	

ECOG PS, Eastern Cooperative Oncology Group Performance Status; PSA, Prostate-Specific Antigen; T, Tumor; ALP, Alkaline Phosphatase; LDH, Lactate Dehydrogenase; ARSI, Androgen Receptor Signaling Inhibitor

*¹ There are 1 missing value.

*² There are 11 missing values.

*³ There are 2 missing values.

*p<0.05

**p<0.01